

STAINLESS STEEL / POLYMER KITS

STAINLESS STEEL SKIMMER LID & POLYMER EDGE PROTECTOR

342 SKIMMER LID KIT

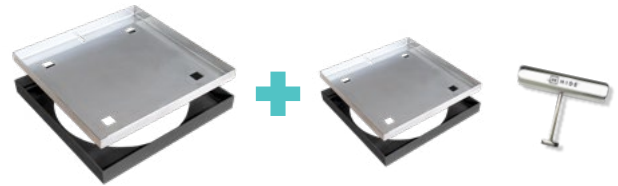
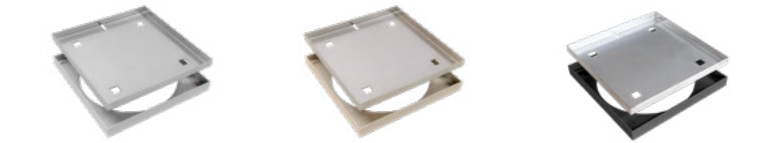
INLAY THICKNESS	POLYMER COLOUR	PRODUCT CODE
15-22mm	ASH	HSSP342-20AS
	BONE	HSSP342-20BN
	CHARCOAL	HSSP342-20CH
25-32mm	ASH	HSSP342-30AS
	BONE	HSSP342-30BN
	CHARCOAL	HSSP342-30CH

206 ACCESS COVER KIT

INLAY THICKNESS	POLYMER COLOUR	PRODUCT CODE
15-22mm	ASH	HSSP206-20AS
	BONE	HSSP206-20BN
	CHARCOAL	HSSP206-20CH
25-32mm	ASH	HSSP206-30AS
	BONE	HSSP206-30BN
	CHARCOAL	HSSP206-30CH

BUNDLE AND SAVE 342 SKIMMER & 206 ACCESS

INLAY THICKNESS	POLYMER COLOUR	PRODUCT CODE
15-22mm	ASH	HSSP342/206-20AS
	BONE	HSSP342/206-20BN
	CHARCOAL	HSSP342/206-20CH
25-32mm	ASH	HSSP342/206-30AS
	BONE	HSSP342/206-30BN
	CHARCOAL	HSSP342/206-30CH



Tip: Bundle your **342 Skimmer Lid** with the **206 Access Cover** for a consistent finish. The 206 size will cover ground water inspection pipes in style. This package is priced to inspire.

FULL POLYMER KITS

POLYMER SKIMMER LID & POLYMER EDGE PROTECTOR

342 SKIMMER LID KIT

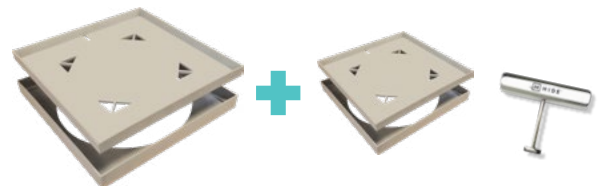
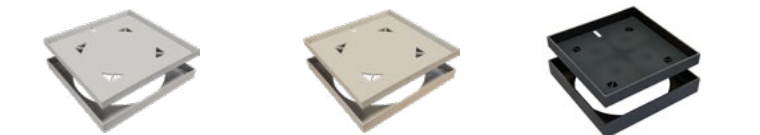
INLAY THICKNESS	POLYMER COLOUR	PRODUCT CODE
15-22mm	ASH	HPSL342-20AS
	BONE	HPSL342-20BN
	CHARCOAL	HPSL342-20CH
25-32mm	ASH	HPSL342-30AS
	BONE	HPSL342-30BN
	CHARCOAL	HPSL342-30CH

206 ACCESS COVER KIT

INLAY THICKNESS	POLYMER COLOUR	PRODUCT CODE
15-22mm	ASH	HPAC206-20AS
	BONE	HPAC206-20BN
	CHARCOAL	HPAC206-20CH
25-32mm	ASH	HPAC206-30AS
	BONE	HPAC206-30BN
	CHARCOAL	HPAC206-30CH

BUNDLE AND SAVE 342 SKIMMER & 206 ACCESS

INLAY THICKNESS	POLYMER COLOUR	PRODUCT CODE
15-22mm	ASH	HP342/206-20AS
	BONE	HP342/206-20BN
	CHARCOAL	HP342/206-20CH
25-32mm	ASH	HP342/206-30AS
	BONE	HP342/206-30BN
	CHARCOAL	HP342/206-30CH



Bundles are available in all three colours and both combinations. Bundled together in one box it's too good to pass up.

POLYMER KITS IN-STOCK



SCAN QR CODE OR TAP - LEARN MORE



BOND FREE OPTION



WHEN SHOULD I USE POLYMER?

In some situations where Earthing (Equipmental Bonding) isn't possible around your pool, a HIDE® polymer selection may be the right option.

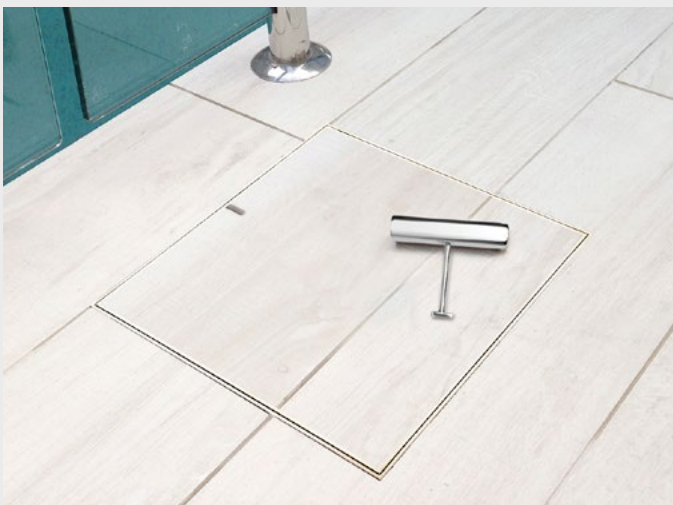
- ✓ Removes electrical bonding requirements
- ✓ Maintenance free
- ✓ Colour options to match tiles
- ✓ 5-year warranty on the polymer edge protector
- ✓ Child resistant
- ✓ Cannot be lifted without the safety key

STAINLESS STEEL / POLYMER KITS?

The best of both worlds!

All the benefits listed above, combined with the proven strength and robust properties of a HIDE® stainless steel lid.

- ✓ Maintenance required on stainless steel
- ✓ 20-year warranty on the stainless steel lid
- ✓ 5-year warranty on the polymer edge protector



Stone on-site installation

316 Stainless Steel Lid

Charcoal Polymer Edge Protector 20 & 30mm

Bone Polymer Edge Protector 20 & 30mm

Ash Polymer Edge Protector 20 & 30mm

Safety Key
Child resistant access



HEAD OFFICE

26 Link Drive,
Yatala, Qld, 4207
P: (07) 3807 2551
E: admin@skimmerlids.com.au
W: skimmerlids.com.au

SALES

AUST/NZ - Gary Steele - M: 0427 270 560 E: gary@skimmerlids.com.au
NSW - Sarah-Jane Winston - M: 0447 981 121 E: sarahjane@skimmerlids.com.au
VIC - Azra Sehic - M: 0499 260 254 E: azra.sehic@skimmerlids.com.au

MARKETING & DIGITAL MEDIA

Brett Arnott - E: brett@skimmerlids.com.au @hideskimmerlids



HIDE Range