

Product Range



Exterior Covers

WE'VE GOT YOU COVERED

Skimmer Lids

PREMIUM 316L STAINLESS STEEL

Insert thicknesses of 10, 15, 20, 30, 40, 50, and 60mm, with an option for 40mm concrete infill.



412mm

342mm

306mm

306mm Easy-Form
Concrete Collar

342mm & 306mm
Concrete

Access Covers

CONCRETE OR TILE INLAY

Insert thicknesses of 10, 15, 20, 30, 40, 50, and 60mm. 40mm concrete infill available.



550x342mm
& 611x411mm

506 & 656mm

256mm

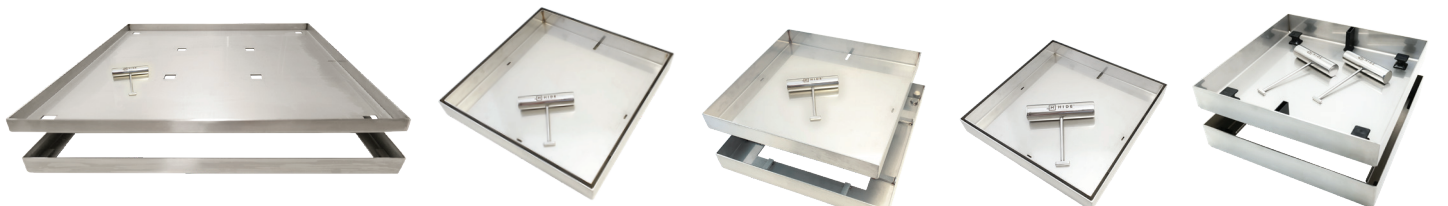
206mm

156mm

Extra Large Access Covers, available in 656mm and 506mm square sizes, are designed to fit tiles with a thickness of 20mm or 30mm.

Drain Covers

CONCRETE OR TILE INLAY



656mm

342mm

314mm

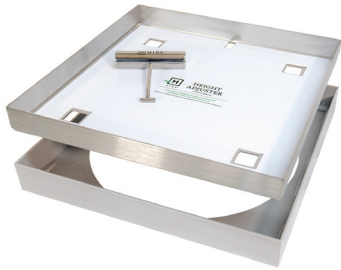
214mm

314mm (Concrete)

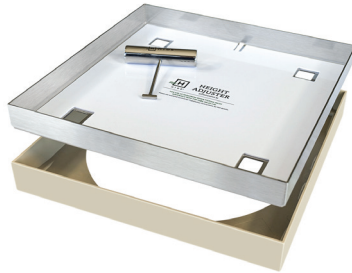
Skimmer Lids (Combination)

BOND-FREE POLYMER COMBINED WITH A STAINLESS STEEL COVERS

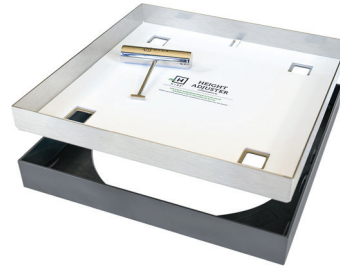
Insert thicknesses of 20, 30, & 40mm, with an option for 40mm concrete infill. No earthing required.



342mm & 306mm
(Ash)



342mm & 306mm
(Bone)



342mm (Charcoal)

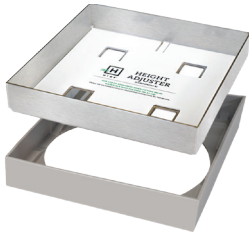


342mm Concrete Infill
(Ash only)

Access Covers (Combination)

BOND-FREE POLYMER COMBINED WITH A STAINLESS STEEL COVERS

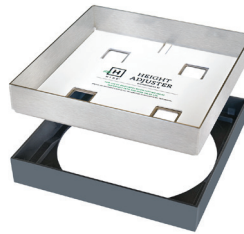
Insert thicknesses of 20, 30, & 40mm, with an option for 40mm concrete infill. No earthing required.



206mm (Ash)



206mm (Bone)



206mm (Charcoal)



206mm Concrete
Infill (Ash only)

Linear Drain Covers (Tile Insert)

1210mm MODULAR DRAIN COVERS

Insert thicknesses of 10, 20, 30, & 40mm

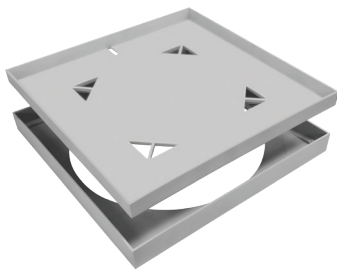
Compatible with Everhard & ReIn plastic channels
(not included)



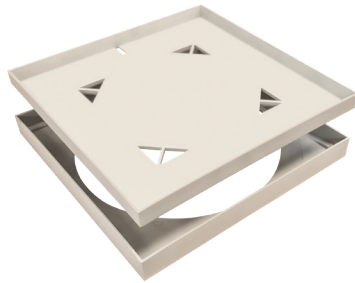
Skimmer Lids (Polymer)

BOND-FREE POLYMER KITS - ASH, BONE & CHARCOAL COLOURS

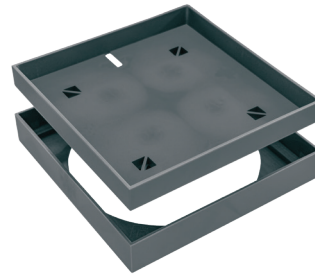
Insert thicknesses of 20 & 30mm. No earthing required.



342mm & 306mm (Ash)



342mm & 306mm (Bone)



342mm (Charcoal)

Access Covers (Polymer)

BOND-FREE POLYMER KITS - ASH, BONE & CHARCOAL COLOURS

Insert thicknesses of 20 & 30mm. No earthing required.



206mm (Ash)



206mm (Bone)



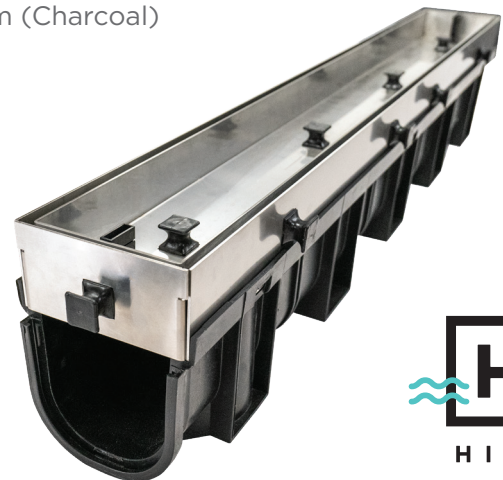
206mm (Charcoal)

Linear Drain Covers (Concrete Infill)

1000mm MODULAR DRAIN COVERS

Infill depth 40mm

Compatible with Everhard plastic channel
(not included)



SKIMMER LIDS

ACCESS COVERS

DRAIN COVERS

Material		Brushed Stainless Steel (SS) 316L High Grade								Stainless Steel / Polymer Combo					Full Polymer			
		Inlay Depths mm																
Application	Size mm square	10	15	20	30	40	40	50	60	20	30	20	30	40	20	30	20	30
Skimmer	306	●		●	●	●	●	●	●			●	●	●			●	●
	342	●	●	●	●	●	●	●	●	●	●	●	●	●	●	●	●	●
	412	●		●	●	●	●	●	●									
Access	156	●		●	●	●	●	●	●									
	206	●		●	●	●	●	●	●	●	●	●	●	●	●	●	●	●
	256	●		●	●	●	●	●	●									
	506			●	●													
	656			●	●													
Access	550x342	●		●	●	●	●											
	611x411	●		●	●	●	●											
Drain	214	●		●	●	●	●											
	314	●		●	●	●	●	●	●									
	342	●		●	●	●	●											
	656			●	●													
¹ Concrete Collar	240ø							●										
	270ø							●										
² Linear Drain Covers L x W																		
Linear Cover ED	1000x125							●										
Linear Cover ED	1210x125	●		●	●	●												
Linear Cover SM	1210x110	●		●	●	●												
Mitred Corner ED	2 x 1210x125	●		●	●	●												
Mitred Corner SM	2 x 1210x110	●		●	●	●												

¹Concrete Collar - 240mmø and 270mmø easy form collar fits into standard Skimmer Boxes.

²Linear Drain Covers (Drain channel not supplied)

ED - Everhard Channel - 125mm wide

SM - ReIn Storm Drain and Storm Mate Channels - 110mm wide

Product Range



SAFE. SEAMLESS. STUNNING.
— LEARN MORE —

SKIMMERLIDS.COM.AU | (07) 3807 2551