



Exterior Covers

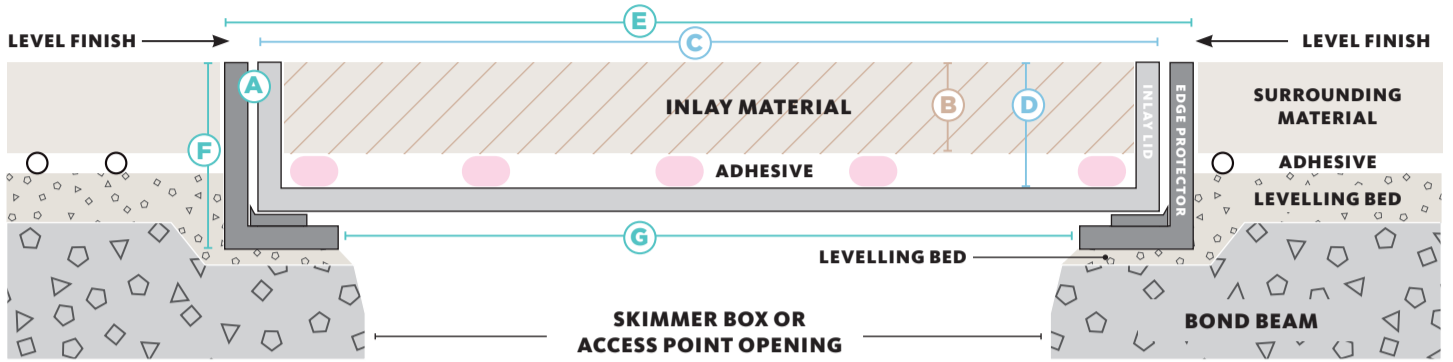
SPECIFICATION DETAIL



H I D E®

Access Covers

316 STAINLESS STEEL RANGE



HIDE KIT	MATERIAL THICKNESS	INLAY LID		EDGE PROTECTOR FRAME		
		PRODUCT ORDER CODE	mm	SIZE	INTERNAL DEPTH	SIZE

156mm Access Cover Kit

A	B	C	D	E	F	G
HAC156-10	8-12	150 sq.	12	156 sq.	23	113 sq.
HAC156-20	15-22		23		33	
HAC156-30	25-32		33		43	
HAC156-40	35-42		43		53	
HAC156-50	45-52		53		63	
HAC156-60	55-62		63		73	

206mm Access Cover Kit

HAC206-10	8-12	196 sq.	12	206 sq.	23	158 sq.
HAC206-20	15-22		23		33	
HAC206-30	25-32		33		43	
HAC206-40	35-42		43		53	
HAC206-50	45-52		53		63	
HAC206-60	55-62		63		73	

256mm Access Cover Kit

HAC256-10	8-12	250 sq.	12	256 sq.	23	218 sq.
HAC256-20	15-22		23		33	
HAC256-30	25-32		33		43	
HAC256-40	35-42		43		53	
HAC256-50	45-52		53		63	
HAC256-60	55-62		63		73	

306mm Skimmer and Access Cover Kit

HSL306-10	8-12	300 sq.	12	306 sq.	23	260 sq.
HSL306-20	15-22		23		33	
HSL306-30	25-32		33		43	
HSL306-40	35-42		43		53	
HSL306-50	45-52		53		63	
HSL306-60	55-62		63		73	

342mm Skimmer and Access Cover Kit

HSL342-10	8-12	336 sq.	12	342 sq.	23	285 sq.
HSL342-15	12-16		18		28	
HSL342-20	15-22		23		33	
HSL342-30	25-32		33		43	
HSL342-40	35-42		43		53	
HSL342-50	45-52		53		63	
HSL342-60	55-62	63	73			

412mm Skimmer and Access Cover Kit

HSL412-10	8-12	406 sq.	12	412 sq.	23	355 sq.
HSL412-20	15-22		23		33	
HSL412-30	25-32		33		43	
HSL412-40	35-42		43		53	
HSL412-50	45-52		53		63	
HSL412-60	55-62		63		73	

550x342mm Access Cover Kit

HSL550x342-10	8-12	544 x 336	12	550x342	23	496 x 288
HAC550x342-20	15-22		23		33	
HAC550x342-30	25-32		33		43	
HAC550x342-40	35-42		43		53	

611x411mm Access Cover Kit

HAC611x411-10	8-12	605 x 405	12	611x411	23	557 x 357
HAC611x411-20	15-22		23		33	
HAC611x411-30	25-32		33		43	
HAC611x411-40	35-42		43		53	

506mm Access Cover Kit

HAC506-20	15-22	500 sq.	23	506 sq.	33	452
HAC506-30	25-32		33		43	

656mm Access Cover Kit

HAC656-20	15-22	650 sq.	23	656 sq.	33	602
HAC656-30	25-32		33		43	



Exterior Covers

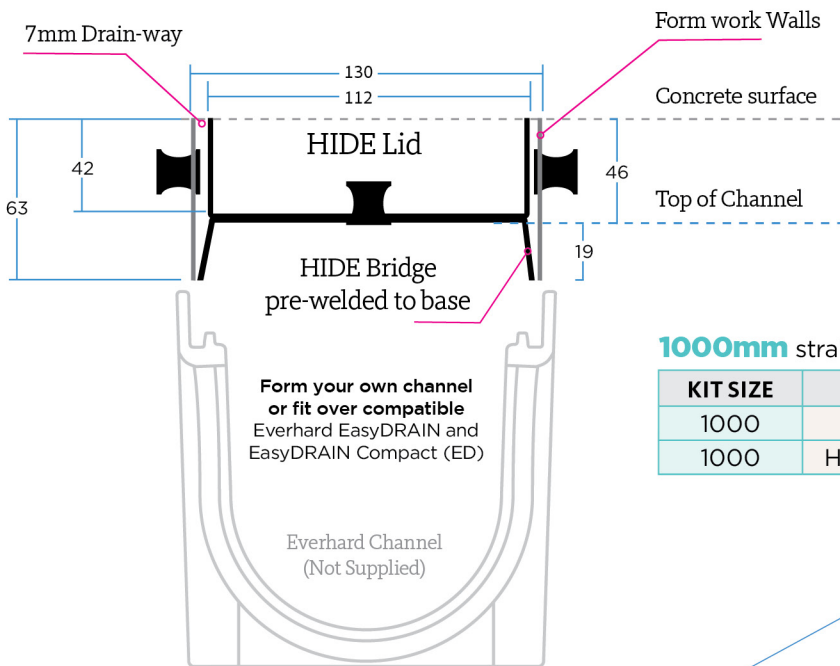
SPECIFICATION DETAIL



H I D E®

Concrete Linear Drain Covers

SUITABLE FOR EVERHARD EASY DRAIN (ED)



Read more:
Website

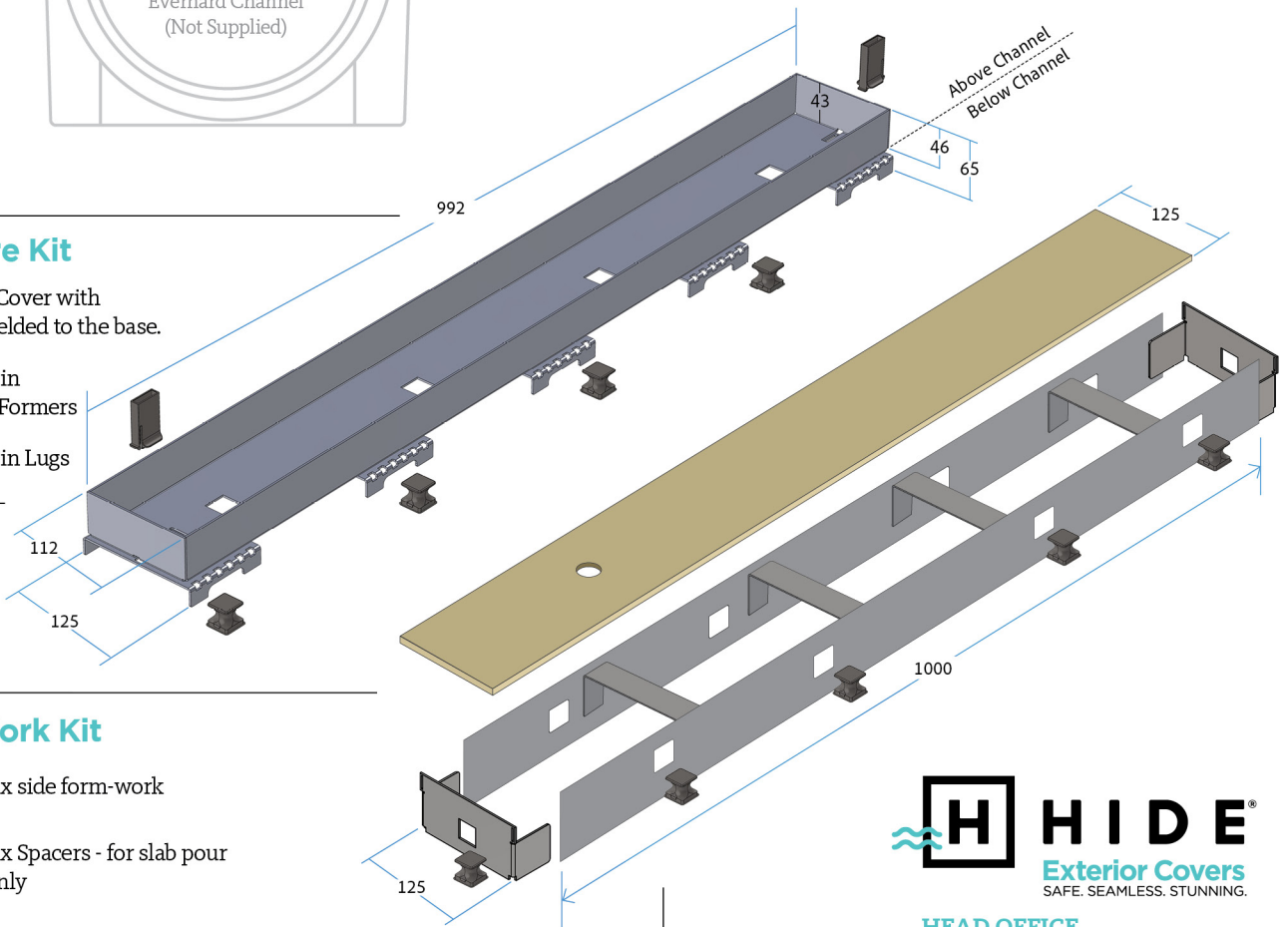


Learn more:
Components &
Installation

1000mm straight modular lengths

KIT SIZE	PRODUCT CODE	CONCRETE DEPTH
1000	HCONDCL1000 - 40ED	43
1000	HCONDCLFK1000 - 40ED	43

- ### Hardware Kit
- 1 x 1210mm Cover with 5 x Bridges welded to the base.
 - 2 x Snap in Key Slot Formers
 - 4 x Snap in Lugs



- ### Form-Work Kit
- 2 x side form-work
 - 4 x Spacers - for slab pour only
 - 2 x End Caps
 - 10 x Snap in Lugs



HEAD OFFICE
26 Link Drive, Yatala, Qld, 4207

P: +61 7 3807 2551 (Office)
E: admin@skimmerlids.com.au
W: www.skimmerlids.com.au



Exterior Covers

SPECIFICATION DETAIL

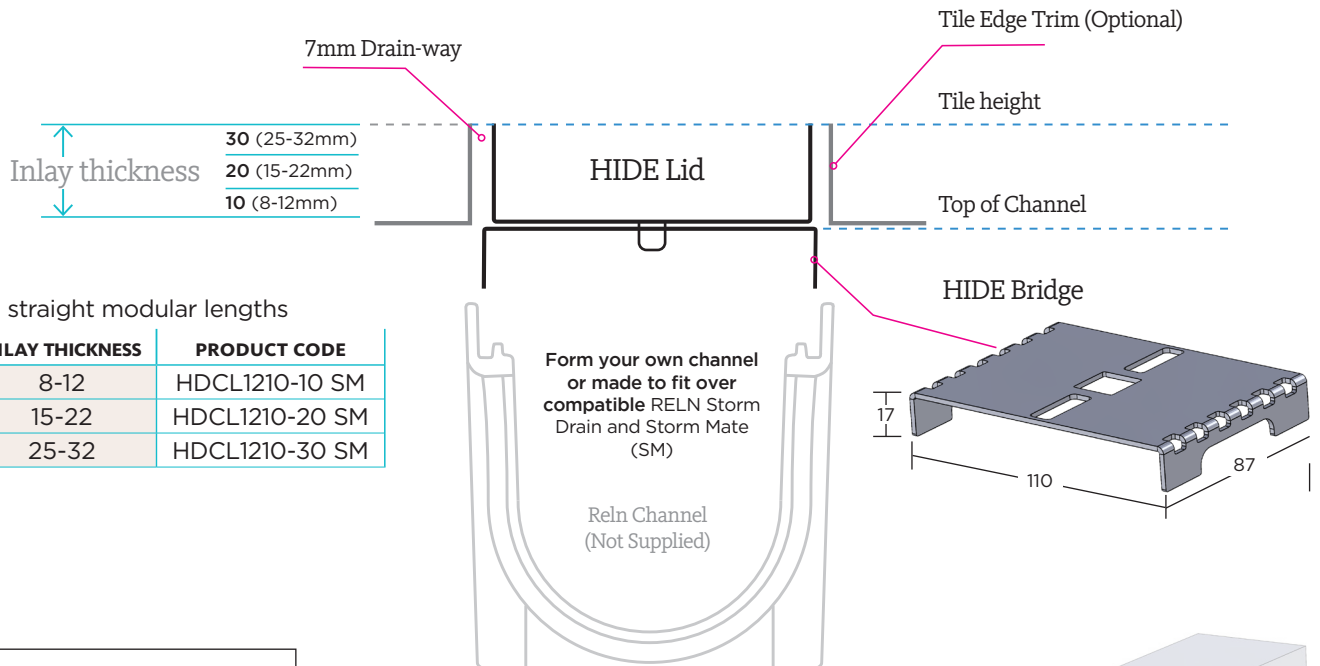


H I D E[®]

Linear Drain Covers

SUITABLE FOR RELN STORM DRAIN (SM)

Tile/Stone Inlay



1210mm straight modular lengths

KIT	INLAY THICKNESS	PRODUCT CODE
10	8-12	HDCL1210-10 SM
20	15-22	HDCL1210-20 SM
30	25-32	HDCL1210-30 SM

Finishing Kit

One Finishing Kit required per job (Ordered separately)

- 1 x SS Cutting Disk
- 2 x End Caps
- 1 x Trade Key

Optional

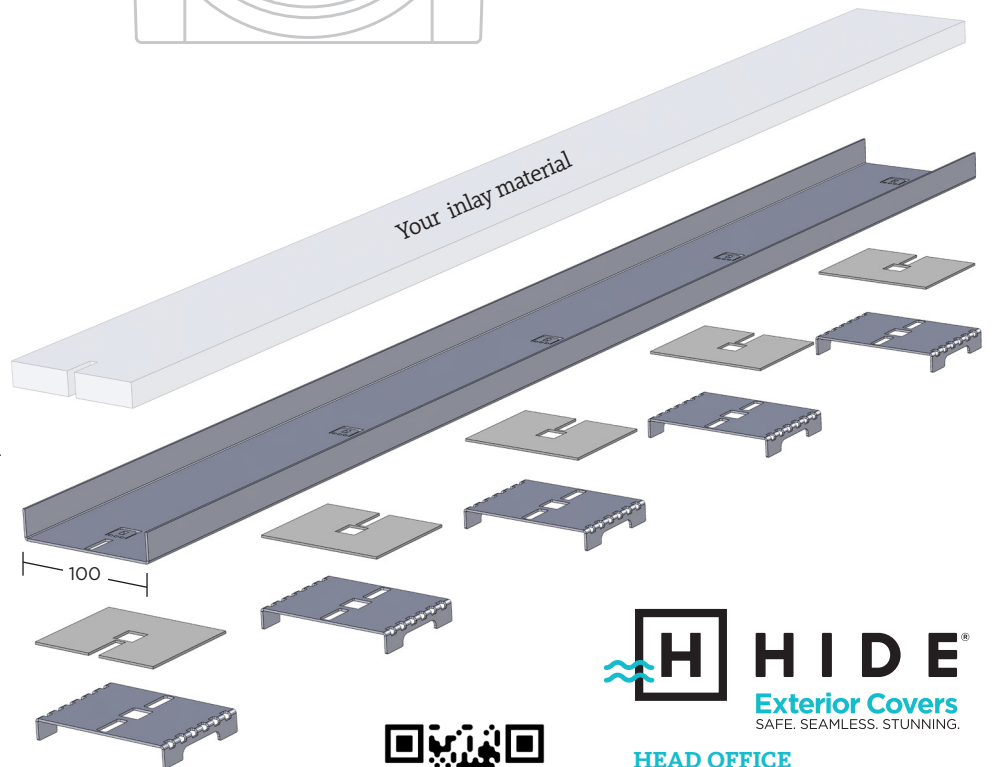
- Extended Bridge @ 50mm high
- Tile Edge Trim

Hardware Kit

1 x Lid 100mm x 1210mm
Cut Lid down to suit tile pattern.

5 x Acrylic Levelers (if required)
2mm + - Adhesive adjustment

5 x Bridges
110mm width x 17mm high



LEARN MORE



HEAD OFFICE

26 Link Drive, Yatala, Qld, 4207

P: +61 7 3807 2551 (Office)
E: admin@skimmerlids.com.au
W: www.skimmerlids.com.au



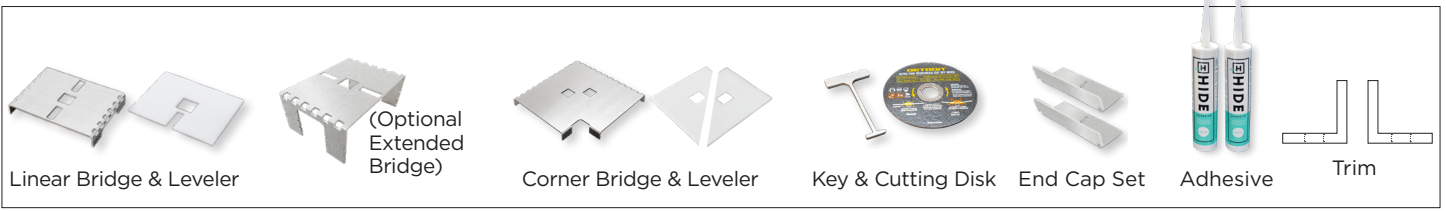
MODULAR EXTERNAL LINEAR DRAIN COVERS



EXTERNAL

SELECT FROM 4 INLAY THICKNESSES 12, 20 & 30mm KITS

(Drain channel not supplied) 40mm depth available for Concrete Wet-Pour or Pavers
Everhard Channel (ED) 125mm



LINEAR LID KIT

2 widths (125mm ED) & (110mm SM)

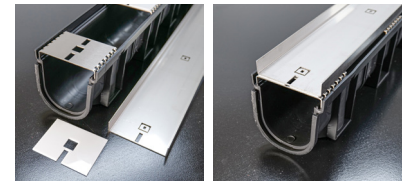
1210mm straight modular lengths

KIT	INLAY THICKNESS	PRODUCT CODE
10	8-12	HDCL1210-10 (ED or SM)
20	15-22	HDCL1210-20 (ED or SM)
30	25-32	HDCL1210-30 (ED or SM)
40	35-42	HDCL1210-40 (ED)



- 1 x linear lid
- 5 x linear bridges & levelers
- 2 x adhesive

• Available on request: Extended bridges. Adds 30mm height & cut down as required.



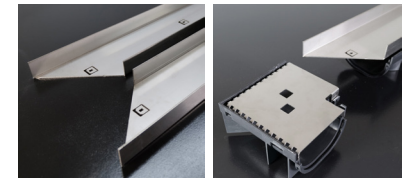
MITRED CORNER KIT 2 x mitred 1210mm modular lengths

1210mm

KIT	INLAY THICKNESS	PRODUCT CODE
10	8-12	HDCLCNR1210-10 (ED or SM)
20	15-22	HDCLCNR1210-20 (ED or SM)
30	25-32	HDCLCNR1210-30 (ED or SM)
40	35-42	HDCLCNR1210-40 (ED)



- 1 x left hand mitred corner lids
- 1 x right hand mitred corner lid
- 8 x linear bridges & levelers
- 1 x corner bridge & leveler
- 4 x adhesive



FINISHING KIT

KIT	PRODUCT CODE
10	HDCLF-10 (ED or SM)
20	HDCLF-20 (ED or SM)
30	HDCLF-30 (ED or SM)
40	HDCLF-40 (ED)

- 2 x end caps
- 1 x access key
- 1 x stainless steel cutting disk

This kit is required (one per install) and provides basic accessories including the access key. Additional end caps can be purchased (see below).



END CAPS

KIT	PRODUCT CODE
10	HDCLEC-10 (ED or SM)
20	HDCLEC-20 (ED or SM)
30	HDCLEC-30 (ED or SM)
40	HDCLEC-40 (ED)

Additional end caps if adding to each 1210mm length (Sets of 2)

End Caps may be added to finish the outer ends of the entire job, or to finish off each 1210mm modular length. Dependent only on your finishing preference.

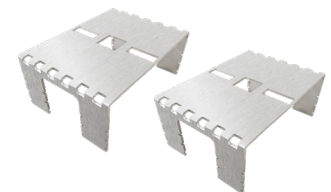


EXTENDED BRIDGES (Optional)

KIT	PRODUCT CODE
x1	HDCLEXBR1210-ED
x1	HDCLEXBR1210-SM

50mm high bridges

Each section of the HIDE® 1210 drain cover has five identical 20mm high bridges supporting the HIDE Cover. When extra height is required, 50mm high bridges can be purchased and cut down to required height.



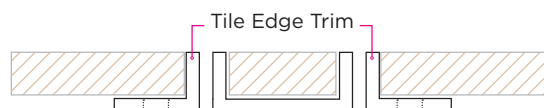
TILE EDGE TRIM (Optional)

1210mm Edge Protector finish

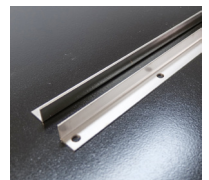
TRIM KIT	PRODUCT CODE
10	HDCLT1210-10
20	HDCLT1210-20
30	HDCLT1210-30
40	HDCLT1210-40



2 x 1210mm trim, to suit either 12, 20, 30, 40mm Lid
Generic to either (ED or SM)



BEDDING MIX - Setup height and line





Exterior Covers

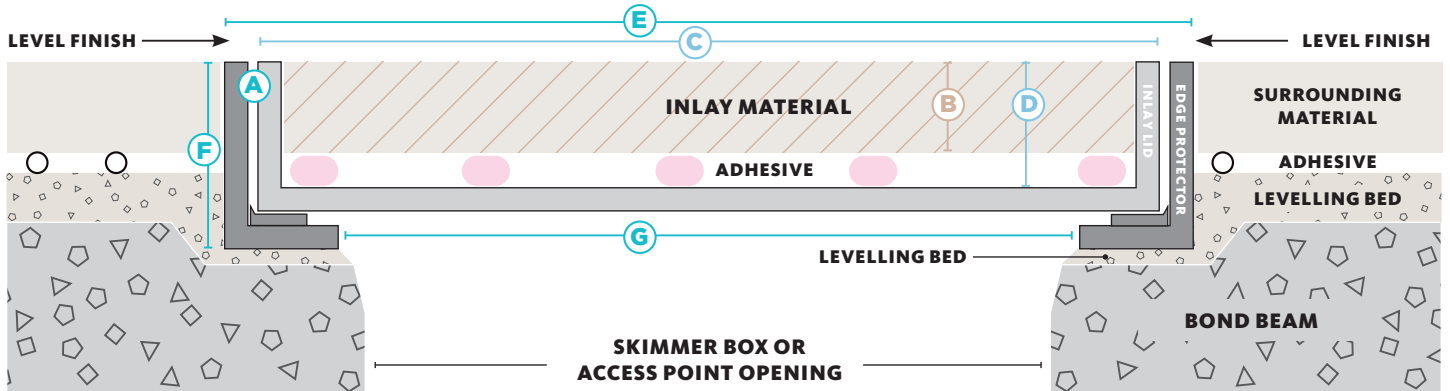
SPECIFICATION DETAIL



H I D E[®] Skimmer Lids

316 STAINLESS STEEL RANGE

CROSS SECTION VIEW OF COMPLETED SKIMMER LID INSTALL



HIDE KIT	MATERIAL THICKNESS	INLAY LID		EDGE PROTECTOR FRAME		
		PRODUCT ORDER CODE	mm	SIZE	INTERNAL DEPTH	SIZE
A	B	C	D	E	F	G

306mm Skimmer and Access Cover Kit

Product Code	Material Thickness (mm)	Skimmer Size (sq.)	Inlay Lid Internal Depth	Skimmer Size (sq.)	Edge Protector External Depth	Underside Opening
HSL306-10	8-12	300 sq.	12	306 sq.	23	260 sq. 280 radius (new model)
HSL306-20	15-22		23		33	
HSL306-30	25-32		33		43	
HSL306-40	35-42		43		53	
HSL306-50	45-52		53		63	
HSL306-60	55-62		63		73	

342mm Skimmer and Access Cover Kit

Product Code	Material Thickness (mm)	Skimmer Size (sq.)	Inlay Lid Internal Depth	Skimmer Size (sq.)	Edge Protector External Depth	Underside Opening
HSL342-10	8-12	336 sq.	12	342 sq.	23	285 sq. 304 radius (new model)
HSL342-15	12-16		18		28	
HSL342-20	15-22		23		33	
HSL342-30	25-32		33		43	
HSL342-40	35-42		43		53	
HSL342-50	45-52		53		63	

412mm Skimmer and Access Cover Kit

Product Code	Material Thickness (mm)	Skimmer Size (sq.)	Inlay Lid Internal Depth	Skimmer Size (sq.)	Edge Protector External Depth	Underside Opening
HSL412-10	8-12	406 sq.	12	412 sq.	23	355 sq.
HSL412-20	15-22		23		33	
HSL412-30	25-32		33		43	
HSL412-40	35-42		43		53	

HIDE KIT		MATERIAL THICKNESS	INLAY LID		EDGE PROTECTOR FRAME		
PRODUCT ORDER CODE		mm	SIZE	INTERNAL DEPTH	SIZE	EXTERNAL DEPTH	UNDERSIDE OPENING

342mm Combination Stainless/Polymer Skimmer Lid Kits

HSSP342-20AS	15-22	336 sq.	23	342 sq.	34	300
HSSP342-20BN						
HSSP342-20CH						
HSSP342-30AS	25-32	336 sq.	33	342 sq.	44	300
HSSP342-30BN						
HSSP342-30CH						
HSSP342-40AS	35-42	336 sq.	43	342 sq.	54	300

306mm Combination Stainless/Polymer Skimmer Lid Kits

HSSP306-20AS	15-22	300 sq.	23	306 sq.	34	280
HSSP306-20BN						
HSSP306-30AS	25-32	300 sq.	33	306 sq.	44	280
HSSP306-30BN						

206mm Combination Stainless/Polymer Access Cover Kits

HSSP206-20AS	15-22	196 sq.	23	206 sq.	34	185
HSSP206-20BN						
HSSP206-20CH						
HSSP206-30AS	25-32	196 sq.	33	206 sq.	44	185
HSSP206-30BN						
HSSP206-30CH						
HSSP206-40AS	35-42	196 sq.	43	206 sq.	54	185

Concrete Combination Stainless/Polymer Kits

342	HCONSSP342-40AS	43	336 sq.	43	342 sq.	54	300
306	HCONSSP306-40AS		300 sq.		306 sq.		280
206	HCONSSP206-40AS		196 sq.		206 sq.		185

342mm Full Polymer Skimmer Lid Kits

HPSL342-20AS	15-22	336 sq.	23	342 sq.	34	300
HPSL342-20BN						
HPSL342-20CH						
HPSL342-30AS	25-32	336 sq.	33	342 sq.	44	300
HPSL342-30BN						
HPSL342-30CH						

306mm Full Polymer Skimmer Lid Kits

HPSL306-20AS	15-22	298 sq.	23	306 sq.	34	280
HPSL306-20BN						
HPSL306-30AS	25-32	298 sq.	33	306 sq.	44	280
HPSL306-30BN						

206mm Full Polymer Polymer Access Cover Kits

HPAC206-20AS	15-22	196 sq.	23	206 sq.	34	185
HPAC206-20BN						
HPAC206-20CH						
HPAC206-30AS	25-32	196 sq.	33	206 sq.	44	185
HPAC206-30BN						
HPAC206-30CH						

STAINLESS STEEL / POLYMER KITS

STAINLESS STEEL SKIMMER LID & POLYMER EDGE PROTECTOR

342 SKIMMER LID KIT

INLAY THICKNESS	POLYMER COLOUR	PRODUCT CODE
15-22mm	ASH	HSSP342-20AS
	BONE	HSSP342-20BN
	CHARCOAL	HSSP342-20CH
25-32mm	ASH	HSSP342-30AS
	BONE	HSSP342-30BN
	CHARCOAL	HSSP342-30CH
35-42mm	ASH	HSSP342-40AS

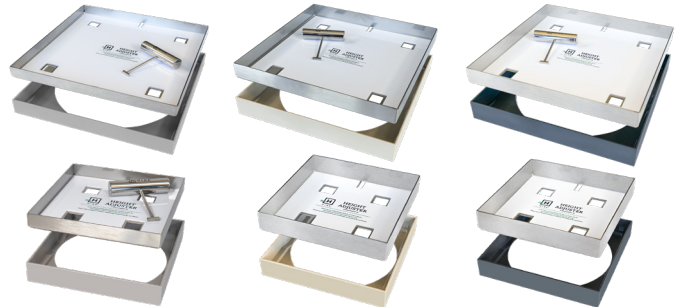
306 SKIMMER LID KIT

INLAY THICKNESS	POLYMER COLOUR	PRODUCT CODE
15-22mm	ASH	HSSP306-20AS
	BONE	HSSP306-20BN
25-32mm	ASH	HSSP306-30AS
	BONE	HSSP306-30BN

ASH

BONE

CHARCOAL



206 ACCESS COVER KIT

INLAY THICKNESS	POLYMER COLOUR	PRODUCT CODE
15-22mm	ASH	HSSP206-20AS
	BONE	HSSP206-20BN
	CHARCOAL	HSSP206-20CH
25-32mm	ASH	HSSP206-30AS
	BONE	HSSP206-30BN
	CHARCOAL	HSSP206-30CH
35-42mm	ASH	HSSP206-40AS

BUNDLE AND SAVE

342 SKIMMER & 206 ACCESS

INLAY THICKNESS	POLYMER COLOUR	PRODUCT CODE
15-22mm	ASH	HSSP342/206-20AS
	BONE	HSSP342/206-20BN
	CHARCOAL	HSSP342/206-20CH
25-32mm	ASH	HSSP342/206-30AS
	BONE	HSSP342/206-30BN
	CHARCOAL	HSSP342/206-30CH
35-42mm	ASH	HSSP342/206-40AS

206 & 306 ACCESS COVER

INLAY THICKNESS	POLYMER COLOUR	PRODUCT CODE
15-22mm	ASH	HSSP206/306-20AS
	BONE	HSSP206/306-20BN
25-32mm	ASH	HSSP206/306-30AS
	BONE	HSSP206/306-30BN



FULL POLYMER KITS

POLYMER SKIMMER LID & POLYMER EDGE PROTECTOR

342 SKIMMER LID KIT

INLAY THICKNESS	POLYMER COLOUR	PRODUCT CODE
15-22mm	ASH	HPSL342-20AS
	BONE	HPSL342-20BN
	CHARCOAL	HPSL342-20CH
25-32mm	ASH	HPSL342-30AS
	BONE	HPSL342-30BN
	CHARCOAL	HPSL342-30CH

206 ACCESS COVER KIT

INLAY THICKNESS	POLYMER COLOUR	PRODUCT CODE
15-22mm	ASH	HPAC206-20AS
	BONE	HPAC206-20BN
	CHARCOAL	HPAC206-20CH
25-32mm	ASH	HPAC206-30AS
	BONE	HPAC206-30BN
	CHARCOAL	HPAC206-30CH

BUNDLE AND SAVE

342 SKIMMER & 206 ACCESS

INLAY THICKNESS	POLYMER COLOUR	PRODUCT CODE
15-22mm	ASH	HPSL342/206-20AS
	BONE	HPSL342/206-20BN
	CHARCOAL	HPSL342/206-20CH
25-32mm	ASH	HPSL342/206-30AS
	BONE	HPSL42/206-30BN
	CHARCOAL	HPSL342/206-30CH

306 SKIMMER LID KIT

INLAY THICKNESS	POLYMER COLOUR	PRODUCT CODE
15-22mm	ASH	HPSL306-20AS
	BONE	HPSL306-20BN
25-32mm	ASH	HPSL306-30AS
	BONE	HPSL306-30BN

ASH

BONE

CHARCOAL



206 & 306 ACCESS COVER

INLAY THICKNESS	POLYMER COLOUR	PRODUCT CODE
15-22mm	ASH	HPSL206/306-20AS
	BONE	HPSL206/306-20BN
25-32mm	ASH	HPSL206/306-30AS
	BONE	HPSL206/306-30BN





Exterior Covers

SPECIFICATION DETAIL

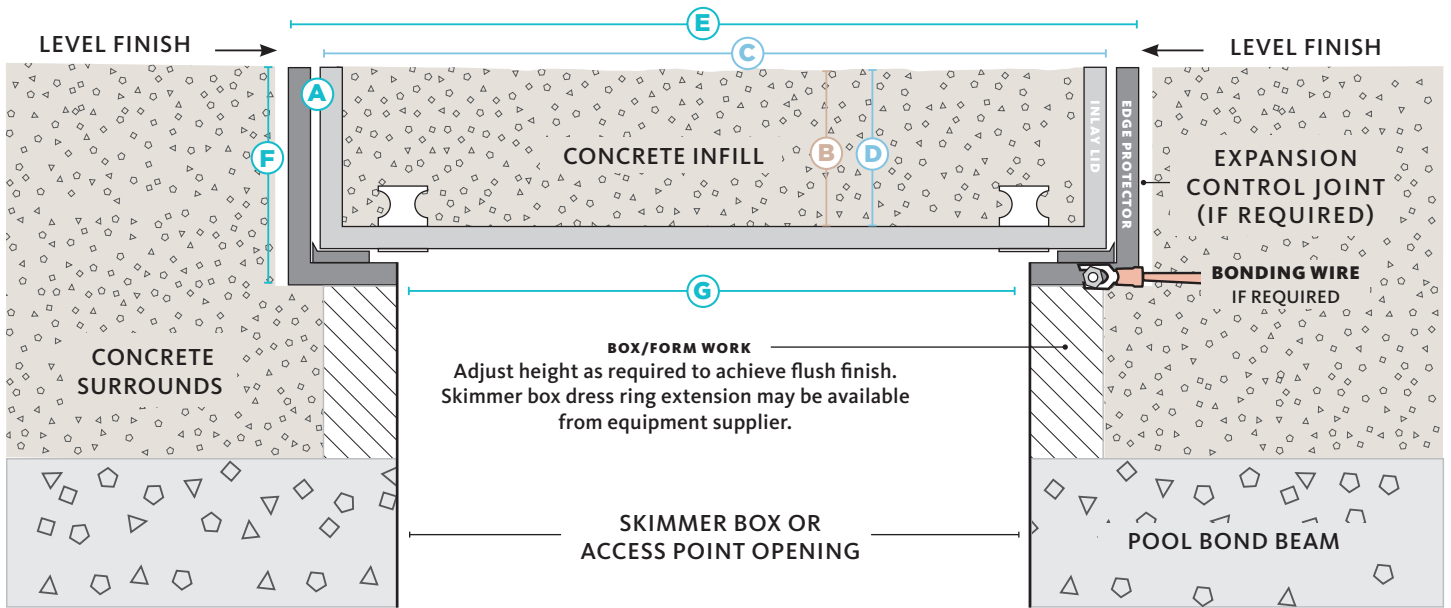


H I D E[®]

Concrete Infill Covers

316 STAINLESS STEEL RANGE

Cross section view of completed concrete skimmer lid install



HIDE products are recommended for use in pedestrian traffic areas only.

ACCESS COVERS Concrete Infill Range (Two Keys and Horizontal Lift)

KIT SIZE mm	HIDE KIT PRODUCT ORDER CODE	CONCRETE THICKNESS mm	INLAY LID		EDGE PROTECTOR FRAME		
			SIZE mm	INTERNAL DEPTH mm	SIZE mm	EXTERNAL DEPTH mm	UNDERSIDE OPENING mm
	A	B	C	D	E	F	G
156	HCON156-40	43	150 sq.	43	156 sq.	53	113 sq.
206	HCON206-40		200 sq.		206 sq.		158 sq.
256	HCON256-40		250 sq.		256 sq.		218 sq.

SKIMMER LID or ACCESS COVER Concrete Infill Range

306	HCON306-40	43	300 sq.	43	306 sq.	53	280 sq. new
342	HCON342-40		336 sq.		342 sq.		304 sq. new
412	HCON412-40		406 sq.		412 sq.		355 sq.

SKIMMER LIDS with easy form Concrete Collar option (see reverse for details)

306	HCONC306-240-40	43	300 sq.	43	306 sq.	53	240 round
	HCONC306-270-40						270 round

DRAIN COVERS Concrete Infill Range (Fit over a *suited pit or mortar bed)

214	HDCON214-40	43	170 sq.	43	214 sq.	53	170 sq.
314	HDCON314-40		300 sq.		314 sq.		256 sq.
342	HDCON342-40		328 sq.		342 sq.		285 sq.

*342 DRAIN (Compatible with Everhard Series 300 Pit - Pit not included)