

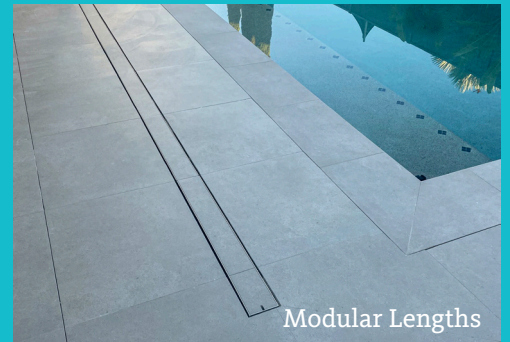
Modular Linear Drain Covers

Outdoor Linear Drain Cover to place over EXTERIOR drainage channels. Suitable for Pedestrian traffic only.

Compatible with Everhard Easy Drain, Reln Storm Drain & Storm Mate or your own custom recess.



Super discreet 316 stainless steel stone/tile drain cover for exterior stone thicknesses of 12, 20, 30 and 40mm.



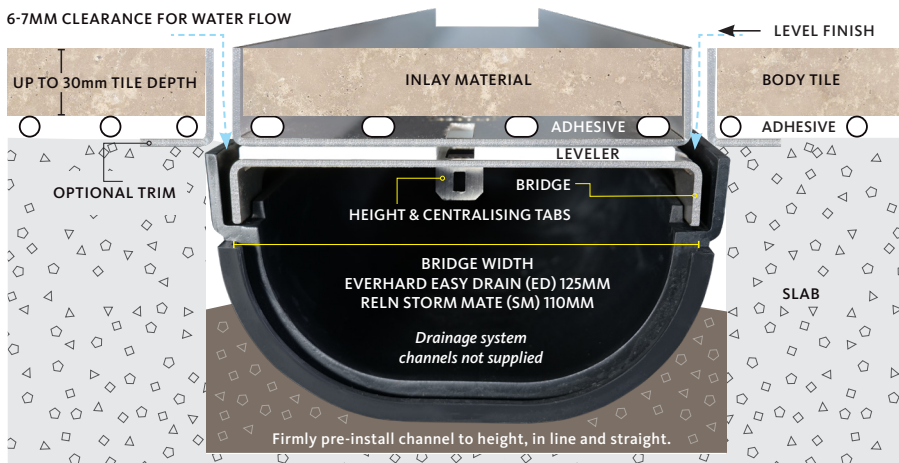
ALL NEW FEATURES

FUNCTION AND DESIGN

- ✓ 316 Stainless steel, strength and long-term durability.
- ✓ 2mm line of Stainless Steel at surface level; no surface deterioration.
- ✓ Installation flexibility: adjustable in height and gradient.
- ✓ No grate to collect surface sediment, making it easy to clean and remove.
- ✓ Factory cut & prefabricated 2.4m corner kits.
- ✓ Butting 1210mm modular lids to cover any length of the drainage channel.
- ✓ Select from 2 widths: compatible channels available in different depths.
- ✓ Most external stone thicknesses are compatible with the HIDE cover system.
- ✓ Centralizing TABs, and loose bridges for installation flexibility.
- ✓ Deep exterior channel that will reduce fall requirements.



6-7MM CLEARANCE FOR WATER FLOW



Important: No acid / chemical wash contact with stainless steel.
Pedestrian traffic only / not suitable for driveways.


HEAD OFFICE

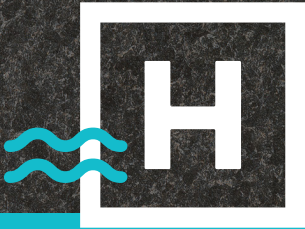
26 Link Drive, Yatala, Qld, 4207

P: +61 7 3807 2551 (Office)

E: admin@skimmerlids.com.au

W: www.skimmerlids.com.au

 @hideskimmerlids



Exterior Covers

SPECIFICATION DETAIL

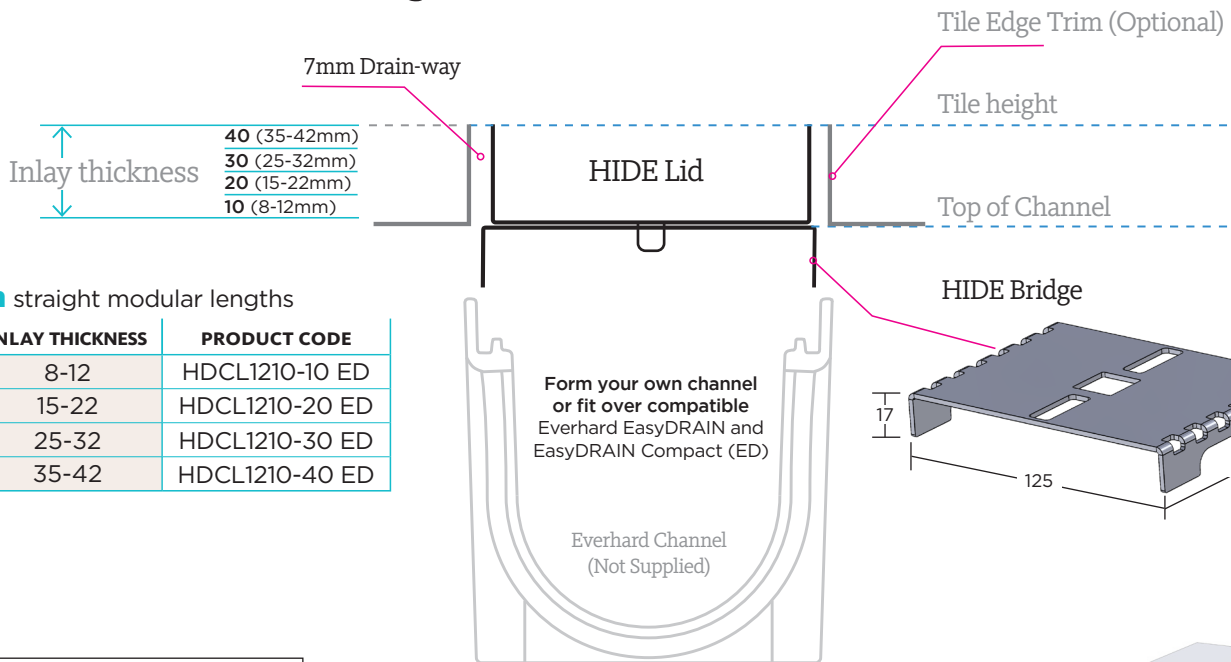


H I D E[®]

Linear Drain Covers

SUITABLE FOR EVERHARD EASY DRAIN (ED)

Tile/Stone Inlay



1210mm straight modular lengths

KIT	INLAY THICKNESS	PRODUCT CODE
10	8-12	HDCL1210-10 ED
20	15-22	HDCL1210-20 ED
30	25-32	HDCL1210-30 ED
40	35-42	HDCL1210-40 ED

Finishing Kit

One Finishing Kit required per job (Ordered separately)

- 1 x SS Cutting Disk
- 2 x End Caps
- 1 x Trade Key

Optional

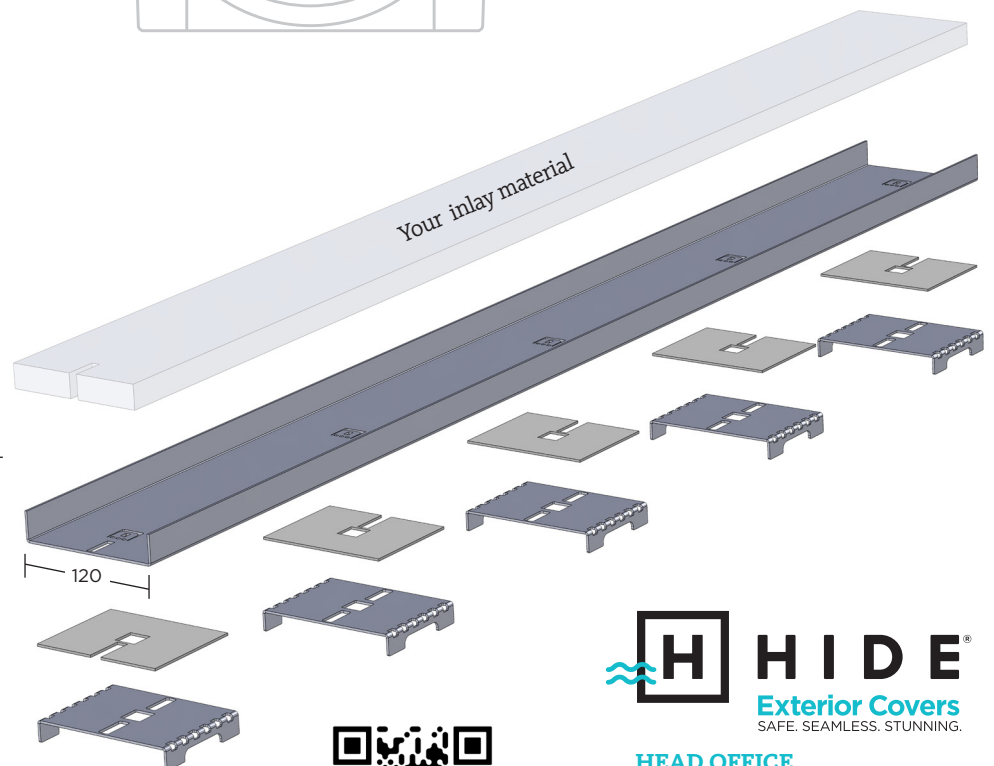
- Extended Bridge @ 50mm height
- Tile Edge Trim

Hardware Kit

1 x Lid 120mm x 1210mm
Cut Lid down to suit tile pattern.

5 x Acrylic Levelers (if required)
2mm +/- Adhesive adjustment

5 x Bridges
125mm width x 17mm height



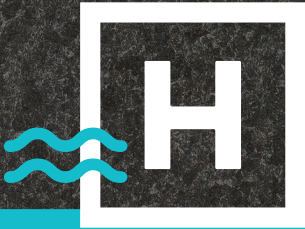
LEARN MORE



HEAD OFFICE

26 Link Drive, Yatala, Qld, 4207

P: +61 7 3807 2551 (Office)
E: admin@skimmerlids.com.au
W: www.skimmerlids.com.au



Exterior Covers

SPECIFICATION DETAIL

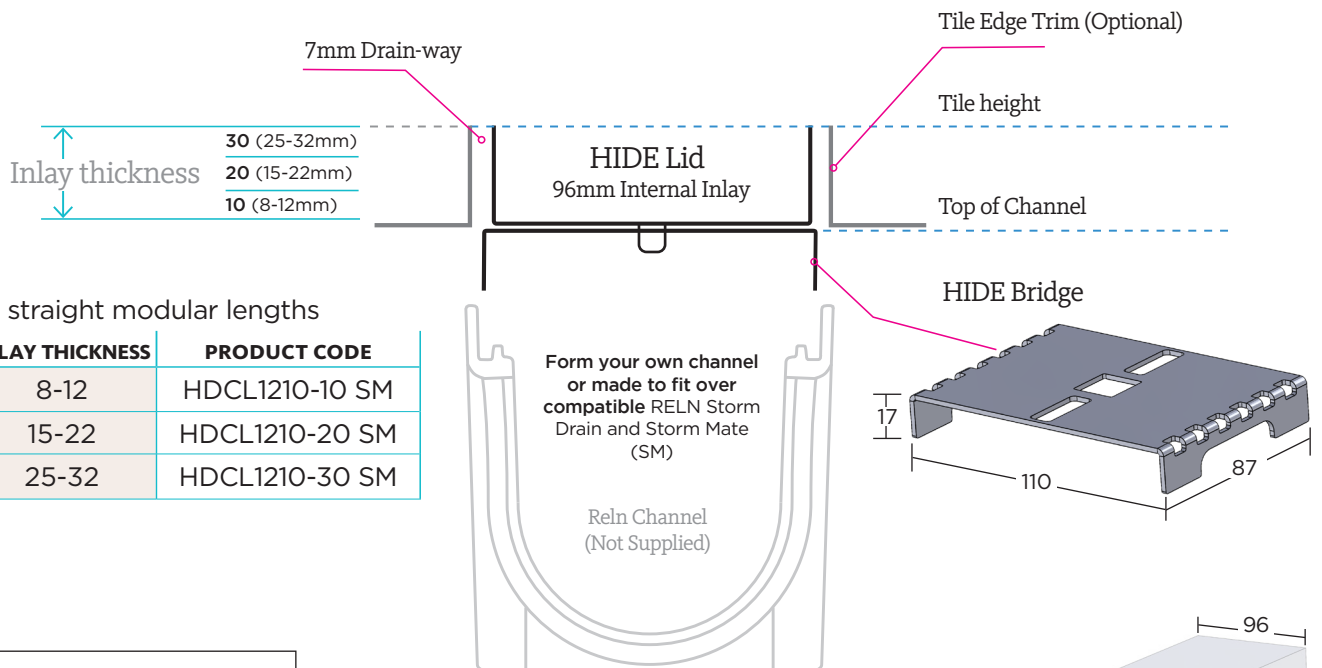


H I D E[®]

Linear Drain Covers

SUITABLE FOR RELN STORM DRAIN (SM)

Tile/Stone Inlay



Finishing Kit

**One Finishing Kit required per job
(Ordered separately)**

- 1 x SS Cutting Disk
- 2 x End Caps
- 1 x Trade Key

Optional

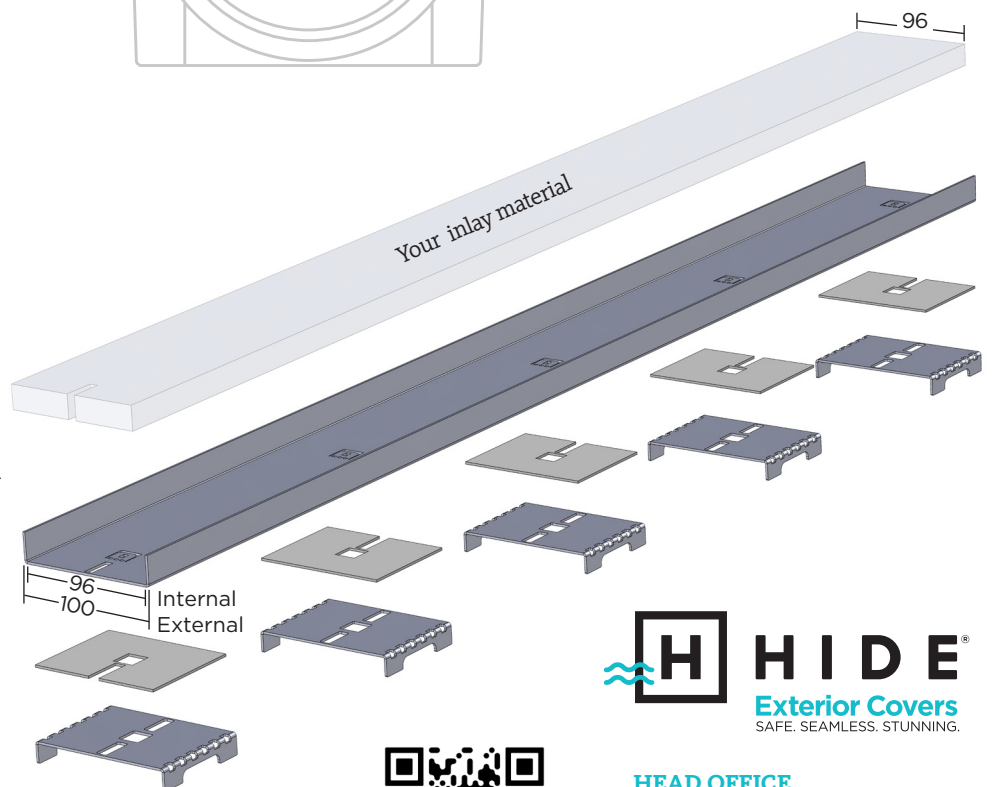
- Extended Bridge @ 50mm high
- Tile Edge Trim

Hardware Kit

1 x Lid 100mm x 1210mm
Cut Lid down to suit tile pattern.

5 x Acrylic Levelers (if required)
2mm + - Adhesive adjustment

5 x Bridges
110mm width x 17mm high



LEARN MORE

HEAD OFFICE

26 Link Drive, Yatala, Qld, 4207

P: +61 7 3807 2551 (Office)
E: admin@skimmerlids.com.au
W: www.skimmerlids.com.au



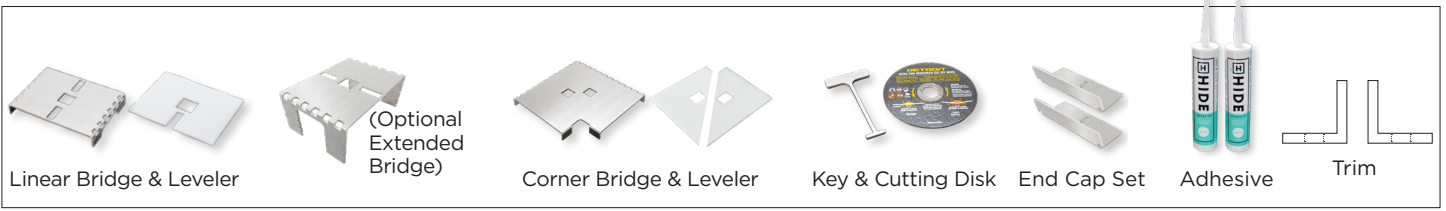
MODULAR EXTERNAL LINEAR DRAIN COVERS



EXTERNAL

SELECT FROM 4 INLAY THICKNESSES 12, 20 & 30mm KITS

(Drain channel not supplied) 40mm depth available for Concrete Wet-Pour or Pavers
Everhard Channel (ED) 125mm



LINEAR LID KIT

2 widths (125mm ED) & (110mm SM)

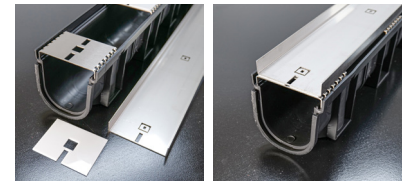
1210mm straight modular lengths

KIT	INLAY THICKNESS	PRODUCT CODE
10	8-12	HDCL1210-10 (ED or SM)
20	15-22	HDCL1210-20 (ED or SM)
30	25-32	HDCL1210-30 (ED or SM)
40	35-42	HDCL1210-40 (ED)



- 1 x linear lid
- 5 x linear bridges & levelers
- 2 x adhesive

• Available on request: Extended bridges. Adds 30mm height & cut down as required.



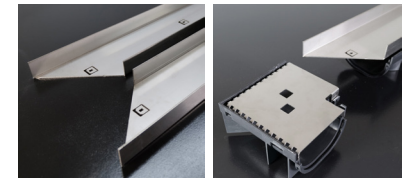
MITRED CORNER KIT 2 x mitred 1210mm modular lengths

1210mm

KIT	INLAY THICKNESS	PRODUCT CODE
10	8-12	HDCLCN1210-10 (ED or SM)
20	15-22	HDCLCN1210-20 (ED or SM)
30	25-32	HDCLCN1210-30 (ED or SM)
40	35-42	HDCLCN1210-40 (ED)



- 1 x left hand mitred corner lids
- 1 x right hand mitred corner lid
- 8 x linear bridges & levelers
- 1 x corner bridge & leveler
- 4 x adhesive



FINISHING KIT

KIT	PRODUCT CODE
10	HDCLF-10 (ED or SM)
20	HDCLF-20 (ED or SM)
30	HDCLF-30 (ED or SM)
40	HDCLF-40 (ED)

- 2 x end caps
- 1 x access key
- 1 x stainless steel cutting disk

This kit is required (one per install) and provides basic accessories including the access key. Additional end caps can be purchased (see below).



END CAPS

KIT	PRODUCT CODE
10	HDCLEC-10 (ED or SM)
20	HDCLEC-20 (ED or SM)
30	HDCLEC-30 (ED or SM)
40	HDCLEC-40 (ED)

Additional end caps if adding to each 1210mm length (Sets of 2)

End Caps may be added to finish the outer ends of the entire job, or to finish off each 1210mm modular length. Dependent only on your finishing preference.

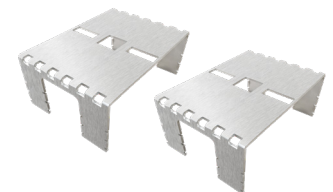


EXTENDED BRIDGES (Optional)

KIT	PRODUCT CODE
x1	HDCLEXBR1210-ED
x1	HDCLEXBR1210-SM

50mm high bridges

Each section of the HIDE® 1210 drain cover has five identical 20mm high bridges supporting the HIDE Cover. When extra height is required, 50mm high bridges can be purchased and cut down to required height.



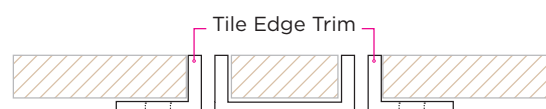
TILE EDGE TRIM (Optional)

1210mm Edge Protector finish

TRIM KIT	PRODUCT CODE
10	HDCLT1210-10
20	HDCLT1210-20
30	HDCLT1210-30
40	HDCLT1210-40



2 x 1210mm trim, to suit either 12, 20, 30, 40mm Lid
Generic to either (ED or SM)



BEDDING MIX - Setup height and line

